



DELAWARE VALLEY HOSTA SOCIETY NEWSLETTER

INSIDE

Parsons' Garden
Breaking Up Is Hard To Do
Bus Trip Finalized

Volume 28, No. 2

www.delvalhosta.org

Late Spring, 2019

Parsons' Garden Tour

Saturday, June 1, 2019

1206 HOLLY LANE

GLEN MILLS, PA 19342

12:00 p.m.: Garden Tour and Potluck Lunch

2:00 p.m.: Super Auction !!!

Hosta-tality for June 1st Potluck

Beverages and plates, etc., will be provided. Come early if you can help set up.

For a balanced meal, we suggest you contribute according to the first letter of your last name:

A–F bring a dessert. **G–P** bring a main dish. **Q–Z** bring a salad or side dish.

From Philadelphia/NJ via I-95 south, or from south Jersey via Commodore Barry/ I-95 north: Take I-95 to I-476 ("Blue Route") north. Take Exit 5 for Route 1 South (going west to Lima). Follow Rt 1 about 4 miles; just after the highway ends, exit right for Route 352 North. Follow Rt 352 (Middletown Rd) for about 3 miles, then turn left on Sycamore Mills Rd. Holly Lane is a cul-de-sac about 0.7 miles on the right. About 20–25 minutes from I-95.

From PA Turnpike or points NE: Take turnpike or other routes to I-476 ("Blue Route") south. Take Exit 5 for Route 1 South (going west to Lima). Follow directions from Rt 1 above.

From Wilmington/points S and W via Rt 202 N/Rt 1: Take Rt 202 North (from I-95 in Wilmington, as needed) to Route 1 North, about 7.4 miles from I-95. Turn right on Rt 1. Follow Rt 1 about 6.5 miles to Route 452 North; turn left. Turn left from Rt 452 to Rt 352 in less than 1/2 mile. Follow Rt 352 about 2 miles as above. About 30 minutes from I-95.

From West Chester/points N and W via Rt 202 S: Take Route 202/322 South to Route 3 East at West Chester. Stay on Rt 3 (West Chester Pike) about 4.5 miles. Just past the intersection for Dutton Mill Rd (north), turn right on Dutton Mill Rd (south), which becomes Valley Rd when it crosses Rt 926. Take Dutton Mill/Valley Rd about 2.5 miles to Sycamore Mills Rd; turn left. Holly Lane is a cul-de-sac about 0.2 miles on the left. About 15 minutes from West Chester.



DVHS Officers

President

Rebecca Boylan
1200 Farmington Ave.
Pottstown, PA 19464
(610) 327-8217
raboylan@comcast.net

Vice President, Program

Marilyn Romenesko
106 Hoiland Dr.
Wilmington, DE 19803
(302) 750-4525
mromen9@gmail.com

Vice President, Membership

David Teager
1411 Deer Meadow Ln.
Garnet Valley, PA
(610) 485-4149
dsteager@earthlink.net

Treasurer

Christel Badey
533 Rosemary Cir.
Media, PA 19063
(610) 566-9421
Christelbadey1223@gmail.com

Secretary

Missy Kashey
460 Halteman Rd.
Pottstown, PA 19465
(610) 469-0096
mjkashey@gmail.com

Committee Chairs:

Publications

Kathy Miller
Kennett Square, PA
kwmille@mtco.com

Display Gardens

Marilyn Romenesko &
Conny Parsons
Glen Mills, PA
connyparsons1@aol.com

Plant Sales & Auctions

Charlie Seaver
Hockessin, DE
seavercharlie@gmail.com

Hostatality

Irene Cassidy
Clayton, NJ
latte_datte@yahoo.com

Raffles/Special Events

Position open

Advisory Board

Conny Parsons, past president Glen Mills,
PA

Michael Flagg, Schwenksville, PA

Ed MacFarland, Glenside, PA

Warren Pollock, Glen Mills, PA

Barbara Tiffany, Point Pleasant, PA

All articles and photos herein are the property of the authors and the Delaware Valley Hosta Society, and are not to be reprinted without express permission.

©2019

PRESIDENT'S MESSAGE

A large group of DVHS'ers went to the Dixie Regional conference in the beginning of May where we saw some lovely gardens in Lewes, DE. These were smaller gardens with a nice mixture of hostas and companions. I always get so depressed when I see wonderfully groomed gardens without a weed in sight as I'm fighting a battle of the ashes right now. Ashes are gasping their last breath as they're plagued with Emerald Ash Borers and last year must've been quite a seedy year. Late with the pre-emergent this year, ash seedlings form a groundcover over all my beds!

Then of course there's the rain! I haven't called the irrigation man to turn ours on yet. We only used it twice last year, and who knows what this season will be like? The hostas are loving it, as I finally have some pretty impressive giant clumps. 'Jurassic Park' and 'Millennium' dwarf the other hostas around them in the picture, shown in color on page 5.

Yet I haven't had time for nematode control. When, between rainstorms? Bed clean-up was late this year and still isn't completed in the remote areas. Will just have to live with it for a few more years until my husband retires and we get a system in place.

No American Hosta Society convention for us this year. We'll just be returning from the American Conifer Society convention in Portland, Oregon at that time. We will visit Seabright Gardens hosta nursery, Iseli Nursery, gardens, and stay at a garden lodge. At least conventions have taught us the bare root plastic bag lesson so ferns and hostas can come home in our carry-on luggage!

Rebecca Boylan

Correction

Our wonderful speaker at the April Meeting, Jim Gears, was presented as Jim Geary on the cover of the last newsletter.

A big apology, Jim.

Thank you for your presentation and your beautiful *Trilium* plants.

Jim's nursery is located at 2065 Parkersville Rd, West Chester.

The Parsons' Garden: Holly Lane

Taken from the 2018 AHS Convention Garden Tour Booklet.

As the Parsons' are planning to cut back their collection, this may be one of our last tour opportunities.

Conny and Jim have planted and nurtured every conifer and most of the understory trees and shrubs over the last seventeen and a half years. The magic of having something blooming from January through November has been an ongoing learning experience, after living many years in Zone 4 Minnesota and Wisconsin.



Holly Lane sits on an irregular lot of two and a half acres. In back, a central lawn sweeps through a garden bordered by trees, under-planted with many beds and long borders. Visitors enjoy walking along the side borders toward the gazebo where there are some interesting trees including many different Japanese maples, redbuds and magnolias. Paths of stone, grass, moss, and mulch weave through or around many beds.



Past the pond is a nice selection of mini hostas in a rock garden and newer beds along a wooden fence. There are numerous benches and chairs to just sit, relax, and enjoy the serenity of this garden. The garden shed, "Catty Shack," was made by a friend.



About the Hostas: After spending a year recording the names of trees, shrubs, perennials and yes, hostas, in a garden journal, even Conny was surprised at tabulating 700 plus different hosta cultivars. Her oldest purchased hosta is from the early 80's in Minneapolis, *Hosta* 'Krossa Regal', a then newly-registered and expensive plant. They still have large clumps from this original plant in their garden.

Conny, an artist, says she likes to paint with plants. She uses the color of hostas to move your eye from one area to another. Her mass plantings look like a tapestry where each color complements or contrasts the next. Her favorite hostas have distinctive features as rugosity, sheen, really ruffled edges and the ones that are just a little kinky. *H.* 'Lizard Lick', *H.* 'Clear Fork River Valley', *H.* 'Lakeside Prophecy', *H.* 'Irish Luck', and *H.* 'Seducer' are just a few favorites. There are many large hostas that are striking from a distance. Long drifts of ferns, astilbe, grasses and variegated petasites border their property in wetter areas.

An artist likes art: Conny and Jim have a collection of garden art that has been created by artisans and friends. Note the iron bird houses, bird baths, arbor, obelisk, and urns on the deck which were made by a good friend. The faces on the colorful post are made by a Wisconsin artist, and the fish are made in Maine. Several unique antiques have also found places in this wonderful garden. Please enjoy!



Streaked Hosta Surgery

David Teager

In order to create variegated hosta seedlings, it is necessary for the hybridizer to maintain one or more streaked plants to serve as the pod parent (mother plant), which will give some percentage of streaked offspring. Over time, streaked hostas (whether the mother or its children) will tend to produce divisions that have settled to a stable pattern: lighter on the edge, lighter in the middle, or, quite frequently, simply a solid color. While the stable variegation patterns are to be desired, and should be separated from the main plant for evaluation, the solid-color forms must also be separated. The all-green divisions, especially, are likely to be stronger growers than the streaked divisions, and can quickly overtake the original plant.

While one can perform this maintenance chore at any time, it always seems best to do it in spring, so that the plant recovers before blooming, and the bloom scapes of the streaked divisions do not get confused with scapes from the non-streaked divisions.

Below is a streaked breeder in my stable that I call 'Eye Ell Tee', which is the spelled-out form of ILT, an abbreviation linking this to 'Imagine Love', a selected seedling of a Mary Chastain plant named 'Imagine'. Last year it had one or two solid-color divisions that were simply snapped off, leaving a nicely (but not flamboyantly) streaked plant. We put this in a large pot so it could be enjoyed by visitors during the AHS Conventions.



This year, however, it was clear that more radical maintenance was needed. While the division showing at lower right is superb, there is too much green in here.

First, the plant was lifted out of the pot and most of the potting soil shaken off. The impressive roots were then thoroughly washed to make it easier to see the crown and detangle the roots.



Doing this made it clear that the crown was planted a bit too deeply in the pot, but it had not suffered as a result.



Then, recognizing that I didn't care if the surgery resulted in loss of the solid color divisions, I used a clean hori-hori digging knife to split the crown around the best streaked eyes. I took care to break only through the crown and not to cut too many roots. Indeed, several all-green eyes were sacrificed with no roots at all, but I also discovered new eyes developing under the good divisions.



In the end, in addition to the sacrificed eyes, several solid divisions had their roots intact; all went to the compost pile.



Of the streaked portions, the surgery resulted in two good 2-eye crowns and one—blooming prematurely—whose streaking is yet to be evaluated. The streaked divisions also had some new eyes developing, which will be evaluated when they unfold. I let the cut crowns dry out briefly in the sun to sterilize the cuts, then planted them back into our nursery bed. If they maintain vigor, I plan to share one of these at a DVHS auction this summer.

So why do hybridizers do this? While ‘Eye Ell Tee’ is not a stunning streaked plant on its own, I have been very pleased with some of its offspring.

Here are two seedlings I’m evaluating: one is a cross of ILT with ‘Teaspoon’, and the other is a cross with ‘Fat Cat’ that has already stabilized to an edge-variegated form.



The former will get used for additional breeding.



I hope the latter will make an impressive garden plant.



Monster Hostas

at the Boylans

No bullying the little guys in the garden!!!

Left: ‘Jurassic Park’, a huge slug resistant plant from Rod Lysne.

Right: ‘Millenium’, giant but beautiful seedling resulting from a ‘Herb Benedict’ x ‘Sagae’ cross. Introduced by Jim and Jill Wilkins

Update On the Russo Garden Tour

Marilyn Romenesko

There may still be space on the coach if you'd like to join us for the trip to the amazing Russo Garden in Cedarville, NJ on Saturday June 29. The fee for the round trip is \$20 per person, payable by check to DVHS. We'll accept a few more reservations up until June 1, 2019.

For those of you who plan to drive on your own, please arrive at the same time as the groups. You can enter their address in your G.P.S.: Dave and Gail Russo, 335 Factory Road, Cedarville, NJ 08311

Note: times are approximate based on traffic. Please use me or Dan as contacts for specific information: Marilyn 302-750-4525, or Dan 302-345-5601.

Bring your own brown bag lunch, and drinks are supplied by DVHS. Please bring your own insect repellent, sunscreen, and your camera as well. We're including 2 short stops prior to arriving at the Russo's.

The schedule is as follows:

9:00 AM. Leave DoubleTree by Hilton (the 2018 Convention Hotel) at 301 W. Dekalb Pike, King of Prussia, from the parking lot to the left as you face the building.

10:00 AM. Leave Faith Presbyterian Church Park and Ride lot. This is at I-95 exit 9 north of Wilmington, DE. At the Marsh Road exit take a right, go under the railroad bridge and take the first left into the church parking lot.

11:00 AM. Stop at the WaWa in Bridgetown, NJ to pick up a lunch item and use restrooms.

11:30 AM. Arrive at the Russo Garden. Join 10-12 members of the DelMarVa Hosta Society to tour the extensive gardens and have your lunch in the garden.

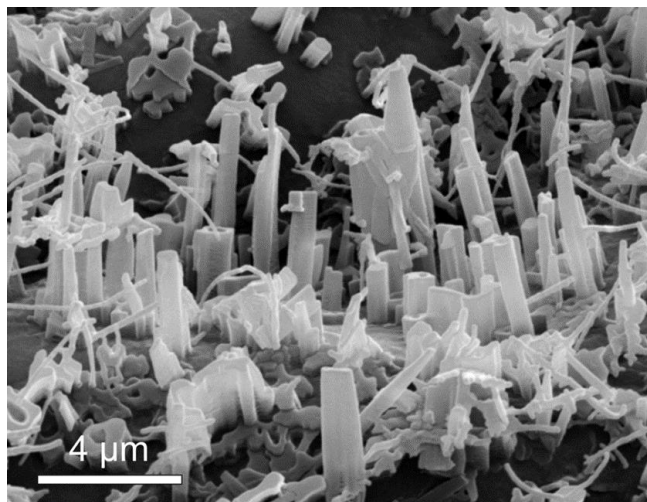
2:30 PM. Depart Russo's for drop off stops at Wilmington at 3:45 PM and King of Prussia at 4:30 PM.

Blue Hostas And Epicuticle Wax

Kathy Miller

The last issue of the American Hosta Society e-Newsletter had a very fine discussion on blue hostas. As most of you already know, the leaves are actually dark green. A layer of epicuticle wax diffuses the light coming off the leaf and gives a blue effect. When are blue hostas at their blue-est? Not at the end of the summer; rain and wind wear away much of the wax and the green is peeking through. Not at the beginning of the summer; there is plenty of wax, but the underlying green has not darkened up, so the leaf has a powder blue look. I find that early June is the best time for a good deep blue.

In 2015, the American Society for Horticultural Science awarded a grant to Purdue University to study: "Seasonal Variation in Cuticular Waxes on Hosta Genotypes Differing in Leaf Surface Glaucousness." For all you chemists out there I quote, "the major wax constituent class on these hosta was primary alcohols, comprising up to 84.6% of the total wax. Many hosta leaves had unusually high C24 length primary alcohols, especially in the spring. However, the dominant chain length in this alcohol class varied with development and genotype" --Whew!!!!



Left: *H. 'Love Pat'*, my favorite. Right: Epicuticle Wax up **CLOSE**.

This Scanning Electron Micrograph (SEM) of a cabbage leaf is the work of Kris Koch.

Root Slayer Nomad Reviewed

Kathy Miller

An invaluable tool in the shade garden. We rearranged and divided many hostas this year. Could not have been easier using this tool. In addition to being very sharp, it can be used to produce great leverage while the gardener kneels. As far as roots go, ¼ inch and smaller get sliced like butter. Half inch is a little more difficult. Larger roots? Use the serrated edge.



June Auction

Please donate hostas and other herbaceous shade perennials.

First check for viruses and nematodes. We don't want to pass these on to someone else.

Would you like to be an Auctioneer?

Charlie and/or David will coach you.
It's fun!

A free hosta if you give it a try.

The American Hosta Society

www.americanhostasociety.org

Check out the benefits of membership.
Join other hosta lovers from around the world.

NemaStop®

Kathy Miller

Recently, there has been a lot of discussion about this new product for getting rid of foliar nematodes in the garden. Evidently, it is an organic product with the same ingredients as NemaKill®, but the formulation is unknown. The advantage seems to be that it is available in smaller, easier-to-use containers.

One source of NemaStop is American Natural Products (<http://americanatural.com>), which describes it as a nematode “suppressant”, rather than a “nematocide”. The application of NemaKill® was discussed in an earlier *Newsletter* (Vol. 25:4). Always remember that organic preparations can be just as hazardous as synthetic. Organic ≠ Safe.

IT'S DUES TIME. Please check your mailing label. If you see a number less than 19, you owe DVHS dues for 2019. Current members' renewal fees are due by the April meeting; any back dues also need to be paid in order to remain current. **You must be a current member to purchase hostas at the special sales, and to receive the *Newsletter* by mail.** The dues pay for the publication of this newsletter and maintenance of the website, as well as for other activities.

Cut off and mail in, or bring to the meeting.

Delaware Valley Hosta Society Membership and Renewal Form

Dues (household membership) are \$10 per year.

Mail to: Rebecca Boylan, DVHS Membership
1200 Farmington Ave.
Pottstown, PA 19464

Please use this form also to update your records for address and e-mail, or to offer your garden for a potential meeting or tour. Thanks!

Name _____

Address _____

Phone _____

E-mail _____

Would you consider opening your garden for a members'tour? _____

Are you in the nursery trade? _____

Calendar of Events 2019 www.delvalhosta.org

Saturday, June 1, 2019. Early Summer Meeting.
Garden Walk, Picnic and Auction.
Conny and Jim Parsons Garden. Glen Mills, PA.

Saturday, June 29, 2019. Bus Trip.
Gail and Dave Russo Garden., Cedarville, NJ.

Saturday, August 3, 2019. Late Summer Meeting.
Garden Walk, Auction and **Big** Leaf Contest.
Wayne Guymon Garden. Chadds Ford, PA.

Friday and Saturday, September 14 & 15, 2019. Fall Hosta
and Garden Forum. Western New York Hosta
Society. Edinboro, PA. www.wnyhosta.com

Saturday, Oct/Nov, 2019. Date TBA. Fall Meeting.
Speaker and Business Meeting.
Location, TBA.

June, 12-15, 2019. AHS National Convention,
"Hostaffinity".
Green Bay, WI.

June, 2020. AHS National Convention. Minneapolis
